

UMPINet

How to Register!

It's easy to connect!

What you need before you get started:

- Ethernet Adapter card (also called a Network Interface Card, NIC)
- Ethernet cable. Can be purchased at the bookstore
- Your UNET username and password (Maine.edu email address). If you do not have this contact Computer Services helpdesk at x9626

Make the connection:

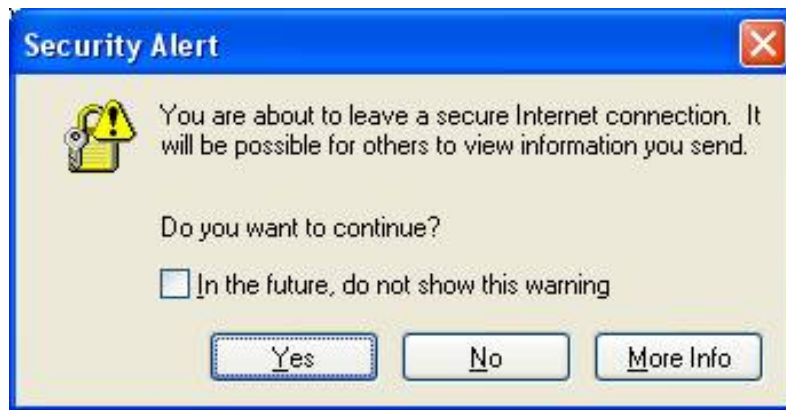
- Plug one end of your network cable into the card. It is usually on the back of your computer. Plug the other end into an available data jack in your residence hall room.
- Turn your computer on and launch Internet Explorer. The registration process will work with other browsers. We recommend you use Internet Explorer.

The process:

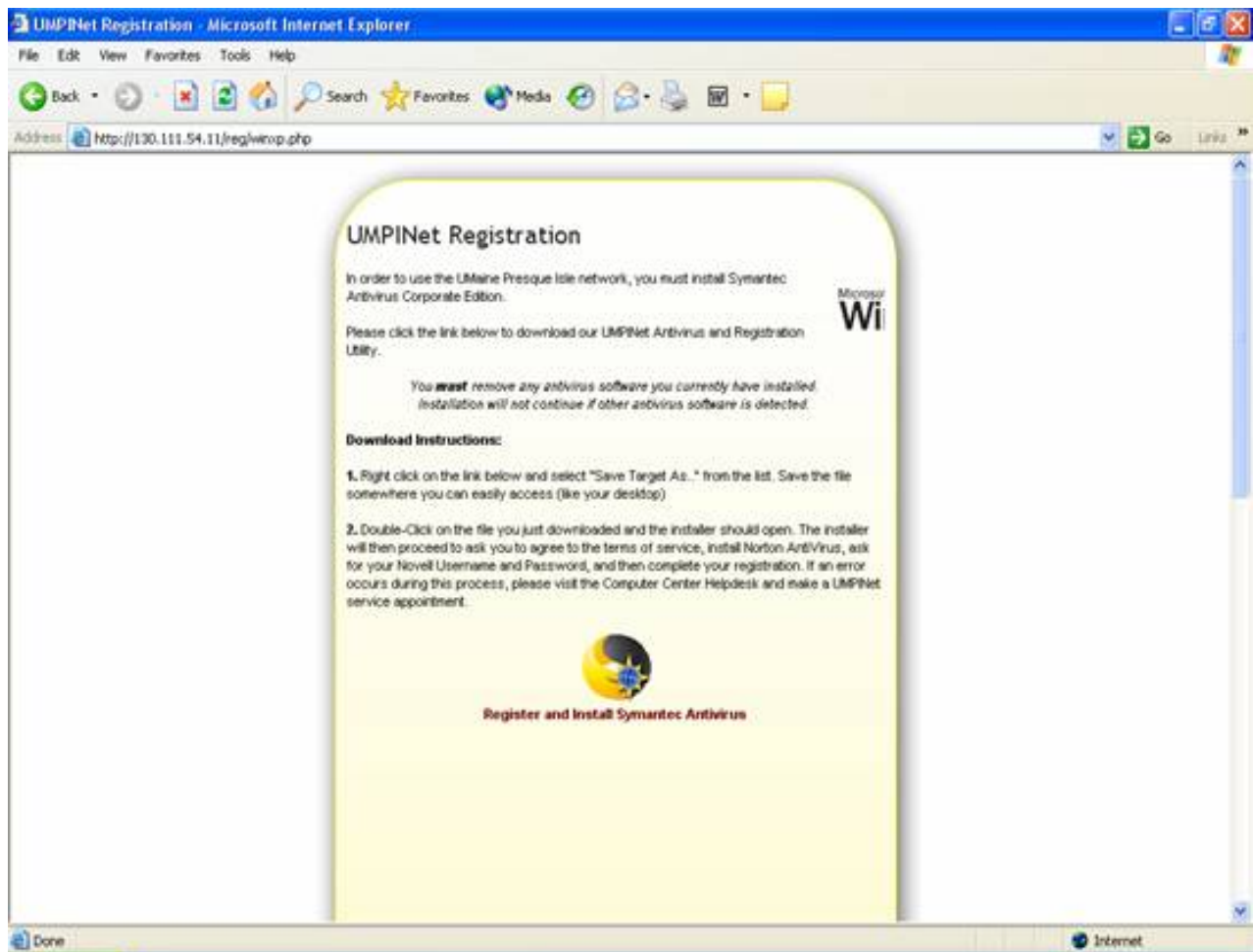
- This guide is for XP users but will work similar with other operating systems.
- After launching your browser, the page below will be displayed. If you get an error such as can not connect to server or page not found, please contact Computer Services at 768-9626 or 768-9657.
- Click on register

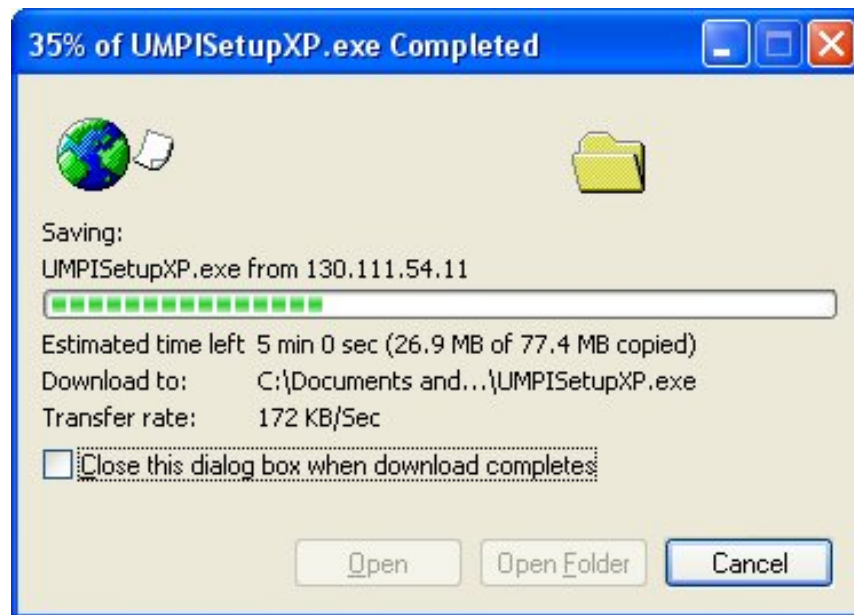


- Click Yes

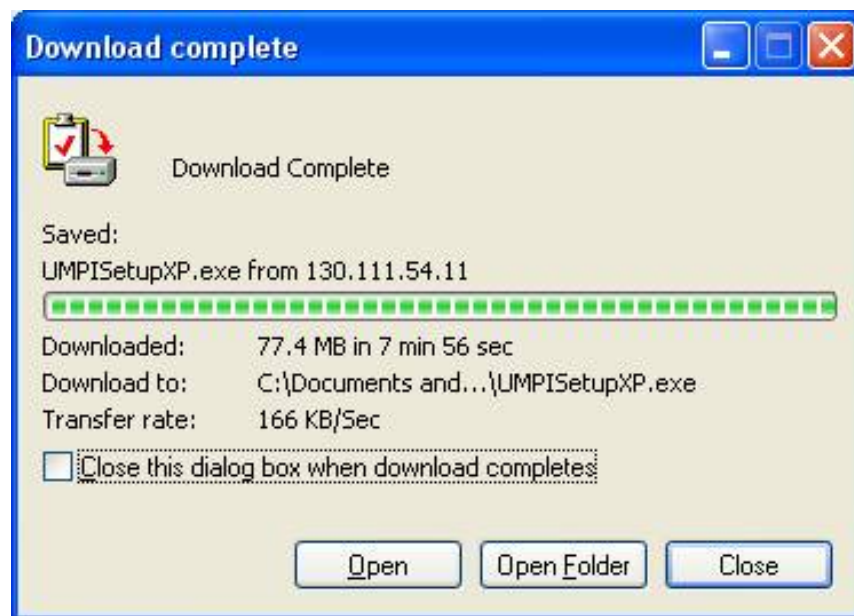


- Right click the link or double click to download the installer. Save the file to your desktop as you may need to re-run the install program.

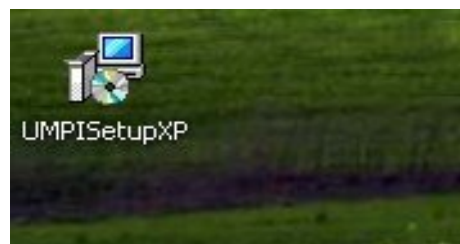




- Click close



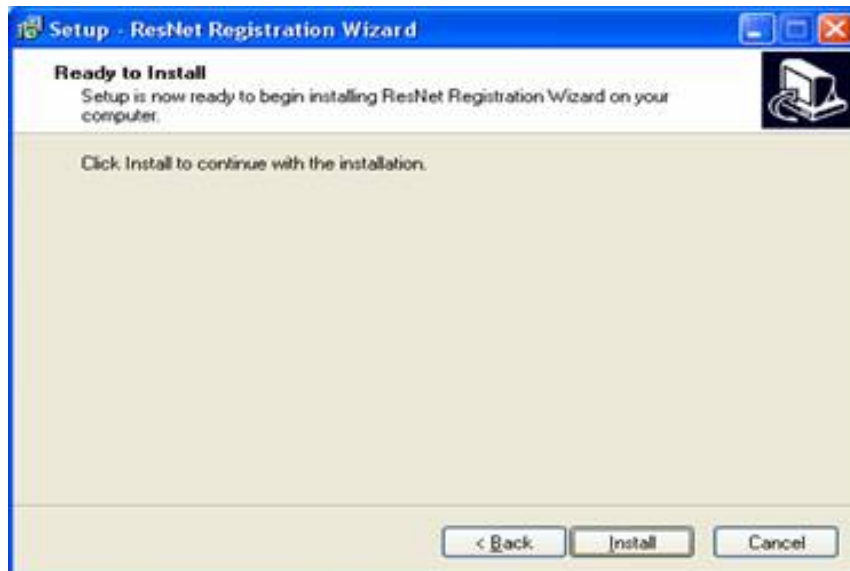
- Double click on the file you just downloaded.



- Click next



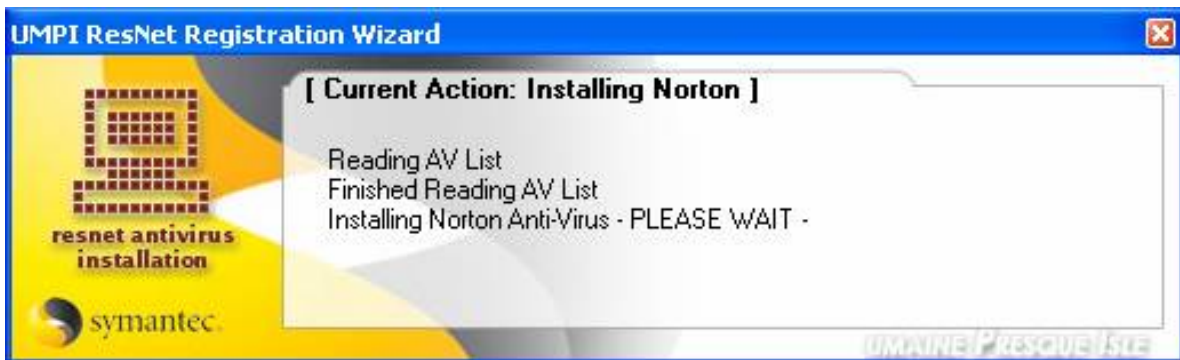
- Click install



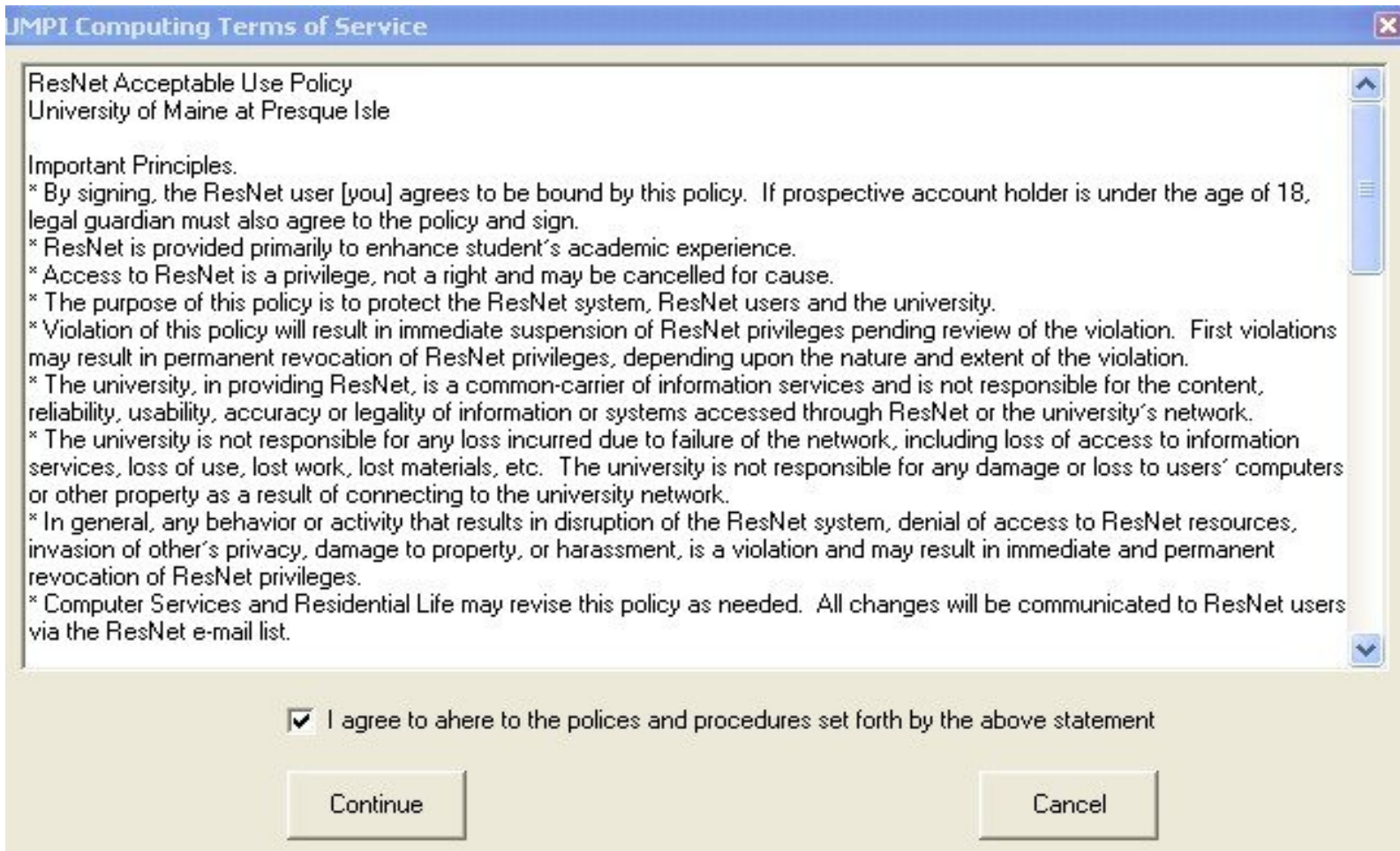
- Install process will begin
- Please be patient as the process can take up to 15 minutes to complete



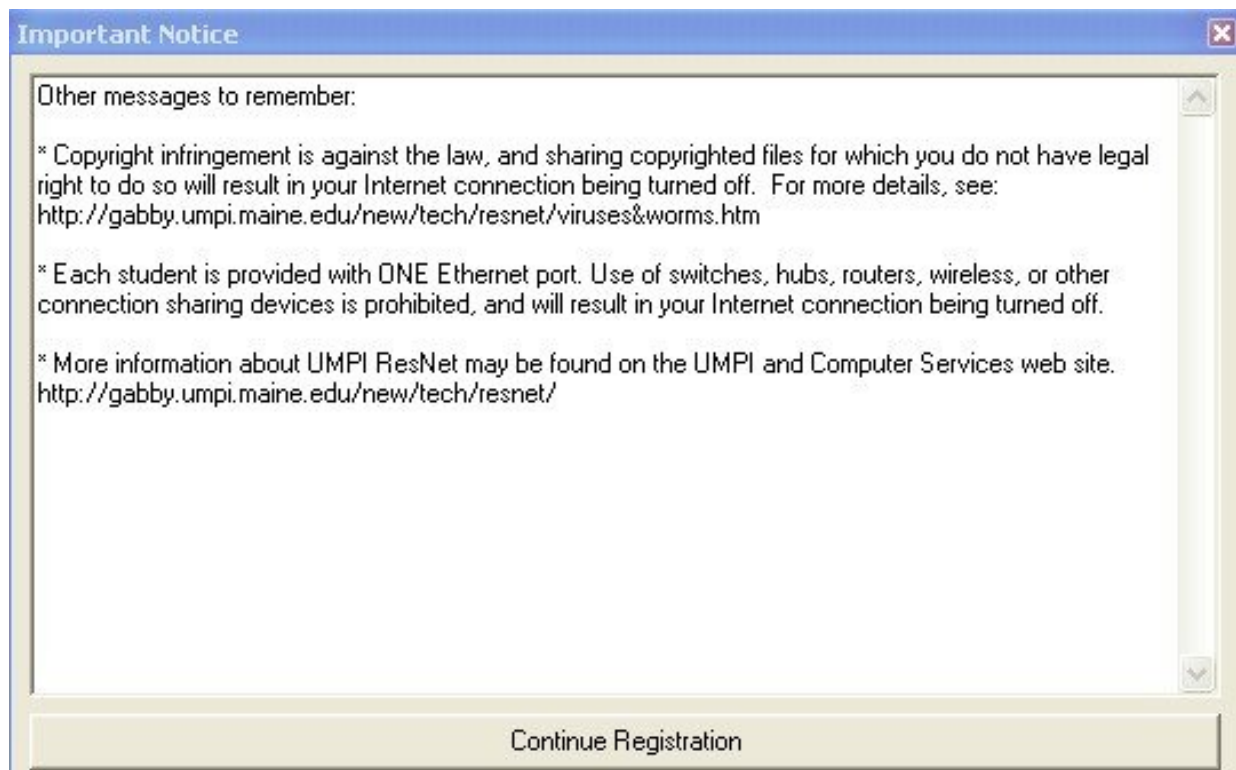
- The wizard will check to see if you have any anti-virus already installed on your computer
- If you have any anti-virus installed, the program will notify you to uninstall the program. Some versions of Symantec AntiVirus may not need to be uninstalled.



- Read the Acceptable Use Policy
- Click the check box next to "I agree..."
- Click continue



- Read the important notice then click "continue registration"



- Enter email username and password. This is your UNET username and password
- If you do not know it, please contact Computer services at x9626
- Click Continue.
- You will receive notification that you have successfully registered.
- If you receive any errors contact Computer Services at 768-9626 or 768-9657
- Reboot your computer

